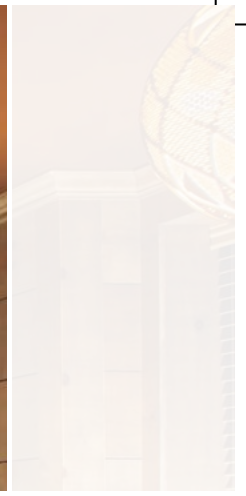


CLASSIC WILTON

my-floor®
FLOORS LIKE A SMILE





WHY USE BROADLOOM CARPET ?

- High Aesthetics
- No Visible seams
- Provides great comfort underfoot when installed with proper padding

CLASSIC WILTON

Classic Wilton is a woven broadloom carpet having upto five different colours per pattern. These carpets are available in many patterns and texture such as a cut-velvet appearance, complementing a subtle ambiance. Weaving generally involves fewer colours with the yarn running continuously, either at the surface or in the back. The result is a beautiful, high-quality and dimensionally stable carpet. The Wilton carpet is a popular choice for commercial areas as it can stand up to high traffic such as airliners, passenger trains, hotels. They are also ideal for use in narrow-width applications such as corridors, walkways and halls.

Our Classic Wilton is:

- Hard wearing
- Easy to clean
- Stain resistant
- Anti-static
- Flame resistant
- Versatile
- The perfect solution





1325 - TROPICAL BEIGE
Design Repeat - 99 cm x 100 cm

01





1325 - TROPICAL BLUE
Design Repeat - 99 cm x 100 cm



1328 - MANDALA RED
Design Repeat - 198 cm x 100 cm



5818 - ORIENTAL BEIGE
Design Repeat - 25 cm x 25 cm

04





5818 - ORIENTAL IVORY
Design Repeat - 25 cm x 25 cm

05





1334 - FLORAL BLUE
Design Repeat - 99 cm x 100 cm



1334 - FLORAL RED
Design Repeat - 99 cm x 100 cm



1332 - COLOSSAL BEIGE
Design Repeat - 198 cm x 100 cm



1332 - COLOSSAL BLUE
Design Repeat - 198 cm x 100 cm



1332 - COLOSSAL RED
Design Repeat - 198 cm x 100 cm



1331 - MYRIAD BLUE
Design Repeat - 99 cm x 100 cm





1327 - FOREST BLUE
Design Repeat - 56.56 cm x 50 cm





0089 - TIMELESS BEIGE
Design Repeat - 49.5 cm x 50 cm



0089 - TIMELESS RED
Design Repeat - 49.5 cm x 50 cm



0089 - TIMELESS BLUE
Design Repeat - 49.5 cm x 50 cm

CLASSIC WILTON

WALL TO WALL CARPET COLLECTION

SPECIFICATION

Construction - Wilton Woven

Pile Content - 100% Heatset Olefin

Pile Weight - ca. 1520 g/m²

Total Weight - ca. 2450 g/m²

Pile Height - ca. 12 mm

Yarn Thickness - 2000 Dtex

Roll Size - 25 mtr x 3.96 mtr

SUITABILITY

For Public Areas, Corridors, Guest Room,
Restaurant, Casino, VIP Lounge, Staircase etc.

WARRANTIES

10-year Carpet Wear Warranty

Lifetime Antishock Carpet Warranty

IDEAL FOR MEDIUM CONTRACT USE.

The subfloor should be dry, smooth, flat, dust-free and resistant to compression and load-bearing. Where seaming is necessary, a seam sealant. Due to dye lot variations, actual material may vary slightly from the samples. Chair pads are recommended to prevent premature wear of carpet.



Anti-slip



Wear Resistance



Reduced Flammability



Antistatic



How to Maintain Your Commercial Carpet

Regular carpet maintenance can enhance your indoor air quality and prevent your carpets appearance from deteriorating prematurely. Because preventative maintenance is less expensive and more effective than infrequent restorative cleaning, we recommend that you:

1. Interior decorations should be finished before carpet installation. Appliances, like air-conditioning, need to be installed and in good condition.
2. For the ground floor or basement, moisture-proof treatments need to be taken before carpet installation.
3. Generally, floors of cement, wood, and other materials should be flat, smooth, and clean. Specifically, for cement floors, there should be some intensity. In addition, the moisture rate should be less than 8% and the floor-level warp rate is no more than 4mm.

TRAFFIC FLOW	ESTIMATED DAILY FLOW	VACUUMING SCHEDULE
Medium Traffic Areas	<500	Twice Weekly
High Traffic Areas	500 - 1000	Once Daily
Extreme Traffic Areas	>1000	Twice or more Daily

Vacuum and spot clean your carpet daily

Accelerated carpet wear occurs when traffic grinds imbedded soil into the carpet fiber. You can extend your carpet's life by placing walk-off mats at exterior entrances and vacuuming traffic areas thoroughly every day.

Only about 20% of carpet soil is soluble in water or solvent. You can remove much of the remaining 80% (fibres and particles) by vacuuming thoroughly every day, emphasising heavy-soil areas like entrances. Your vacuum should have a powered brush and strong suction.

To ensure spots are removed promptly, give your daily cleaning staff a carpet first aid kit containing:

- Dry cleaning solvent (e.g. perchloroethylene)
- Detergent solution (a teaspoon of non-bleach powder in a cup of water)
- Ammonia solution to neutralise acid stains (a tablespoon of ammonia in a cup of water)
- Vinegar (of citric acid) solution to neutralise alkaline stains (1/3 white vinegar, 2/3 water)
- White absorbent cloths or paper towels.

SPOT REMOVAL GUIDE

Spots and Stains removal is most difficult step in carpet maintenance, which can be seen as a science. If spots and stains could be treated properly, it can retain a good appearance. Otherwise it will bring permanent damage to carpet or let it be colour-fade or colour-changing. Therefore, it need a careful plan to remove spots and stains and treat them seriously. Here are several tips that may help.

1. Scrape off all solid materials with a spatula or a spoon.
 2. Blot up all excess liquid with a white clean towel.
 3. Apply a certain amount of the corresponding cleaning agent onto the treated area for 3 minutes.
 4. Use a towel to work from the edges into the center of the stain.
 5. Use a dry towel to remove the stain.
- **Dry Stains:** Vacuum thoroughly to remove dry stains. Don't use liquid.
 - **Wet Stains:** Blot with absorbent white cloth, or paper towel or use a spatula to remove excess then blot. For larger spills, a portable extraction unit or wet/dry vacuum is most effective for removing spilled liquids.
 - **Dried Stains:** Gently remove as much as possible of the substance using a small, soft hand brush or spatula to break up any crusted material. Vacuum thoroughly to remove loosened particles.



CLASSIC WILTON

my-floor[®]
FLOORS LIKE A SMILE