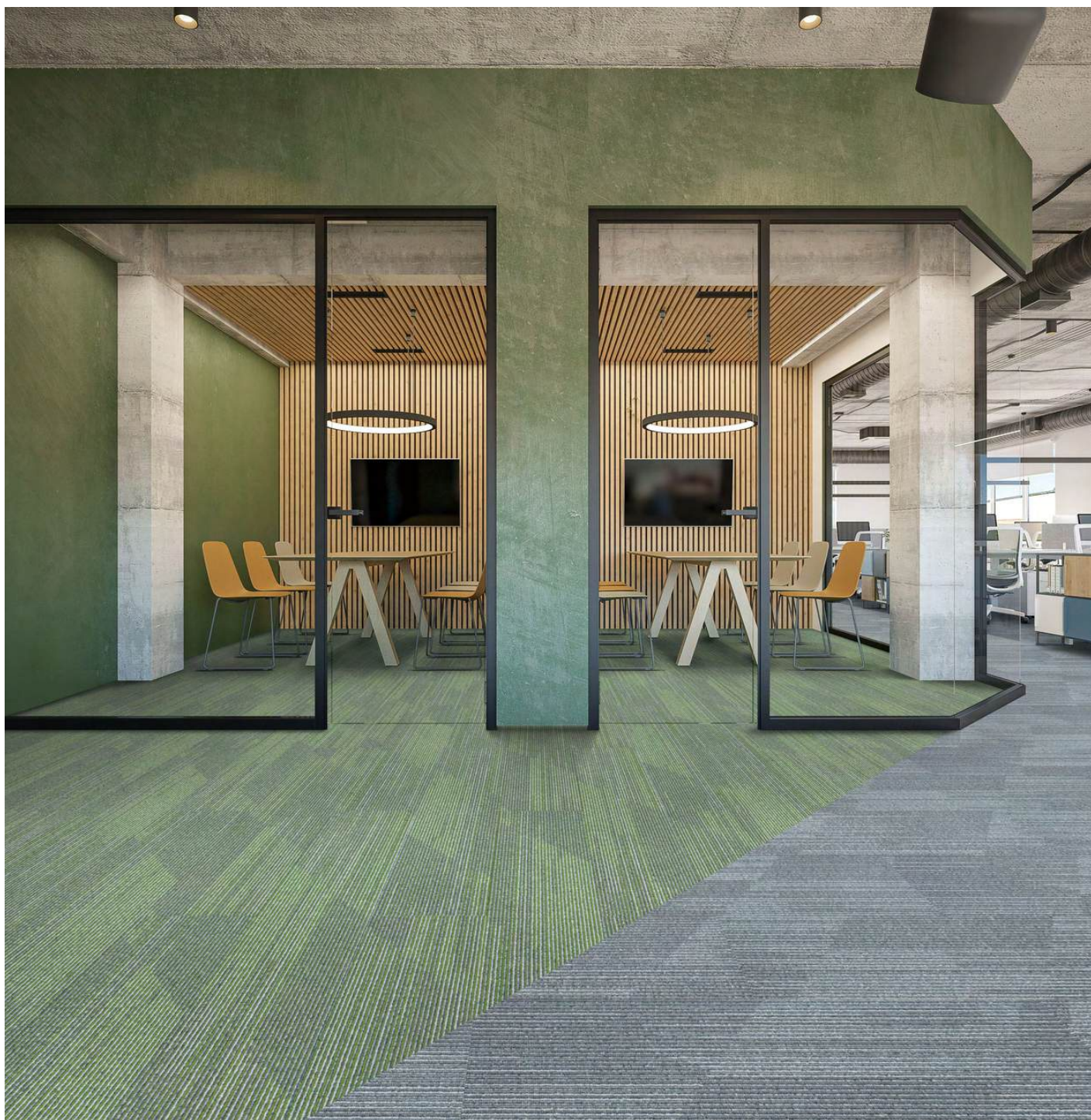


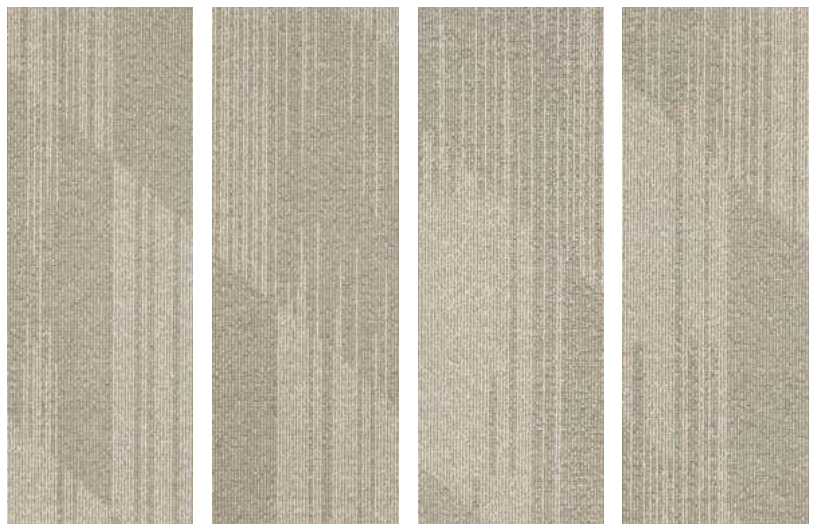
TRENDZ

MODULAR CARPET TILES





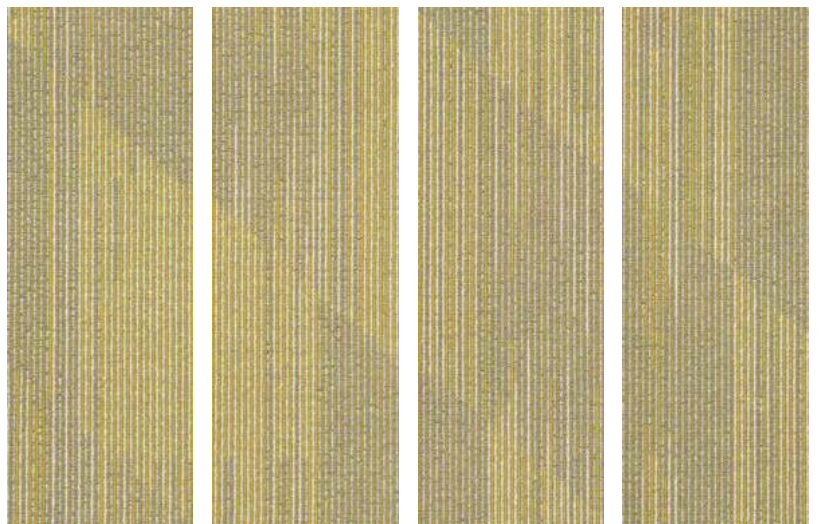
101



101



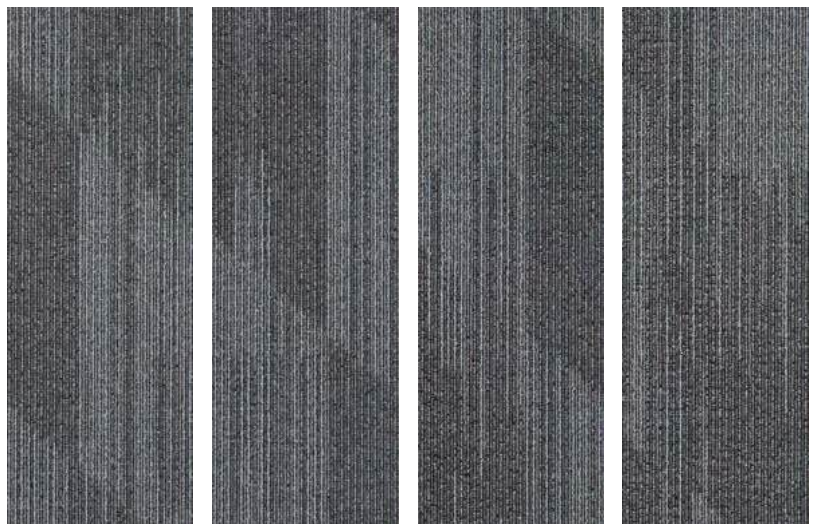
201



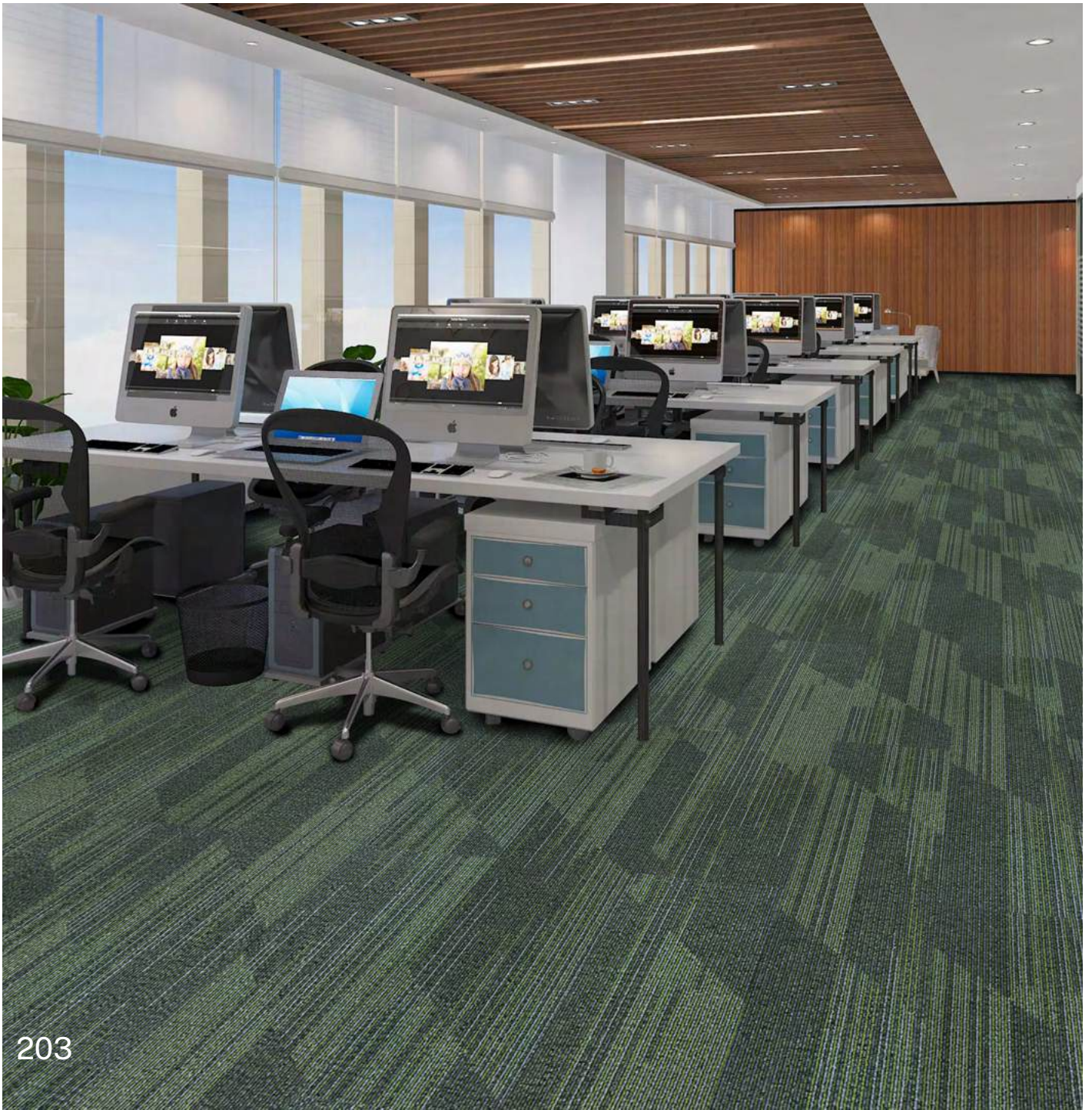
201



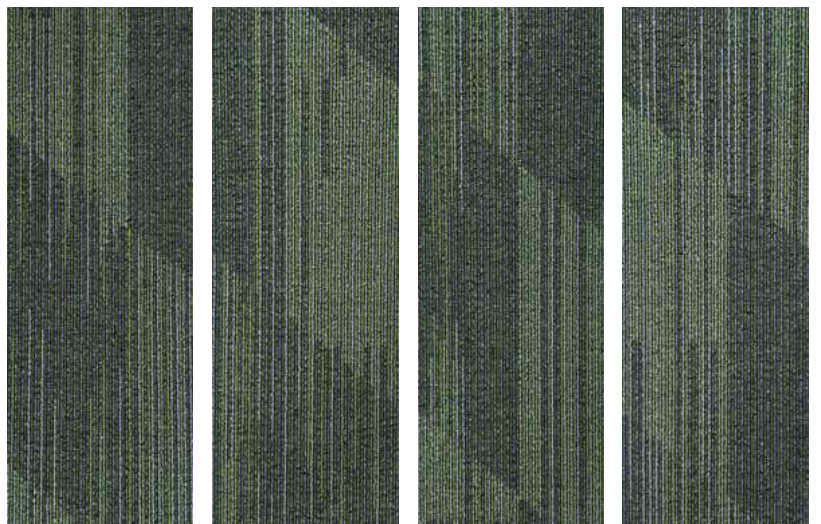
103



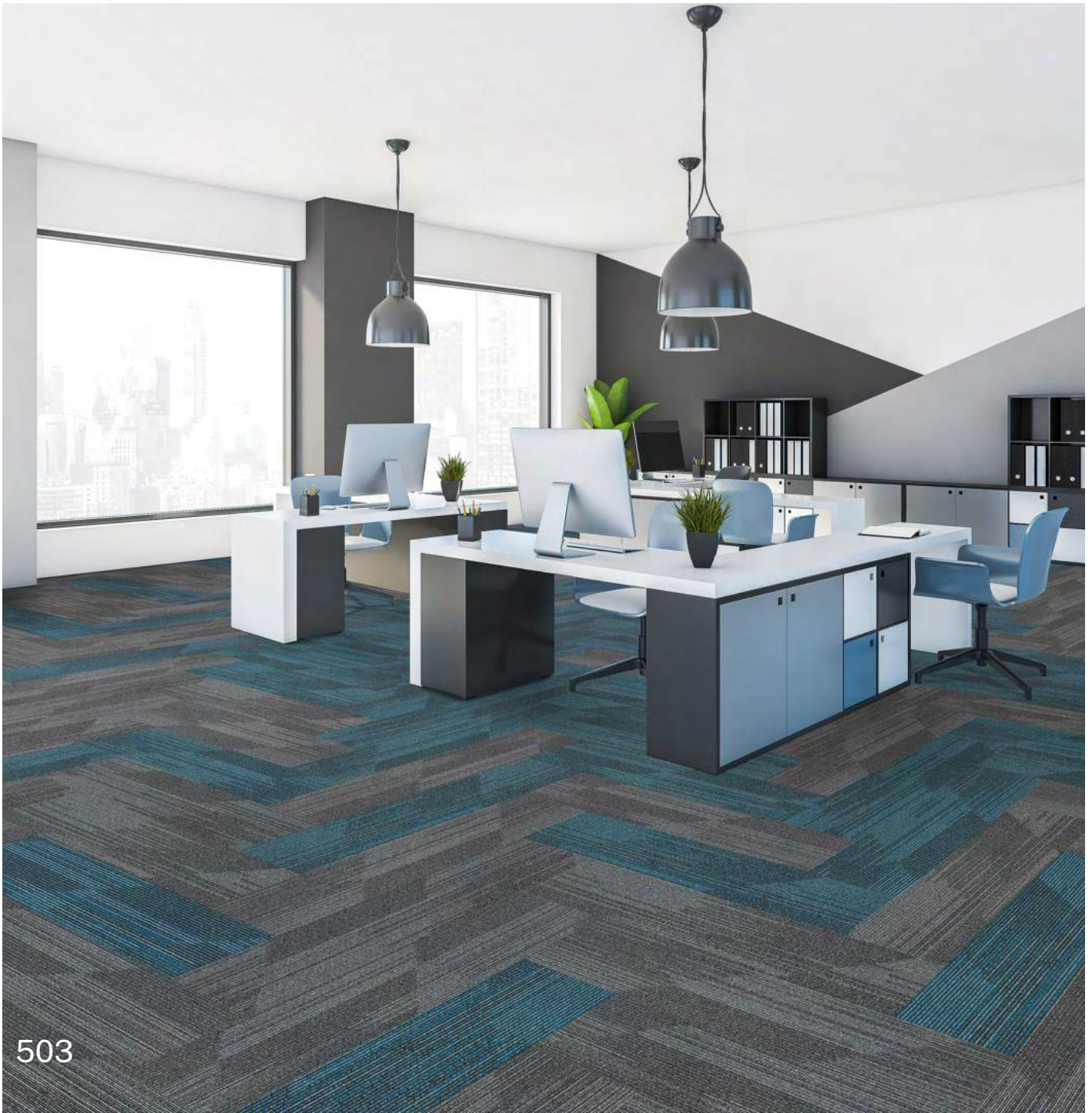
103



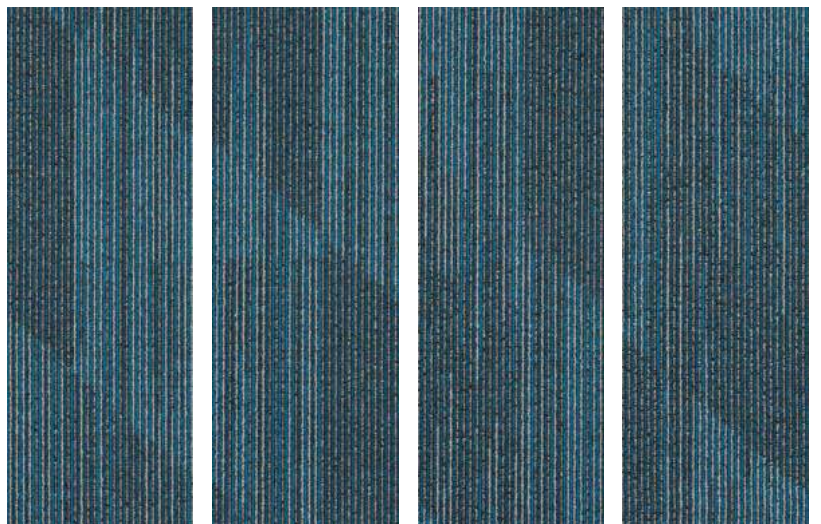
203



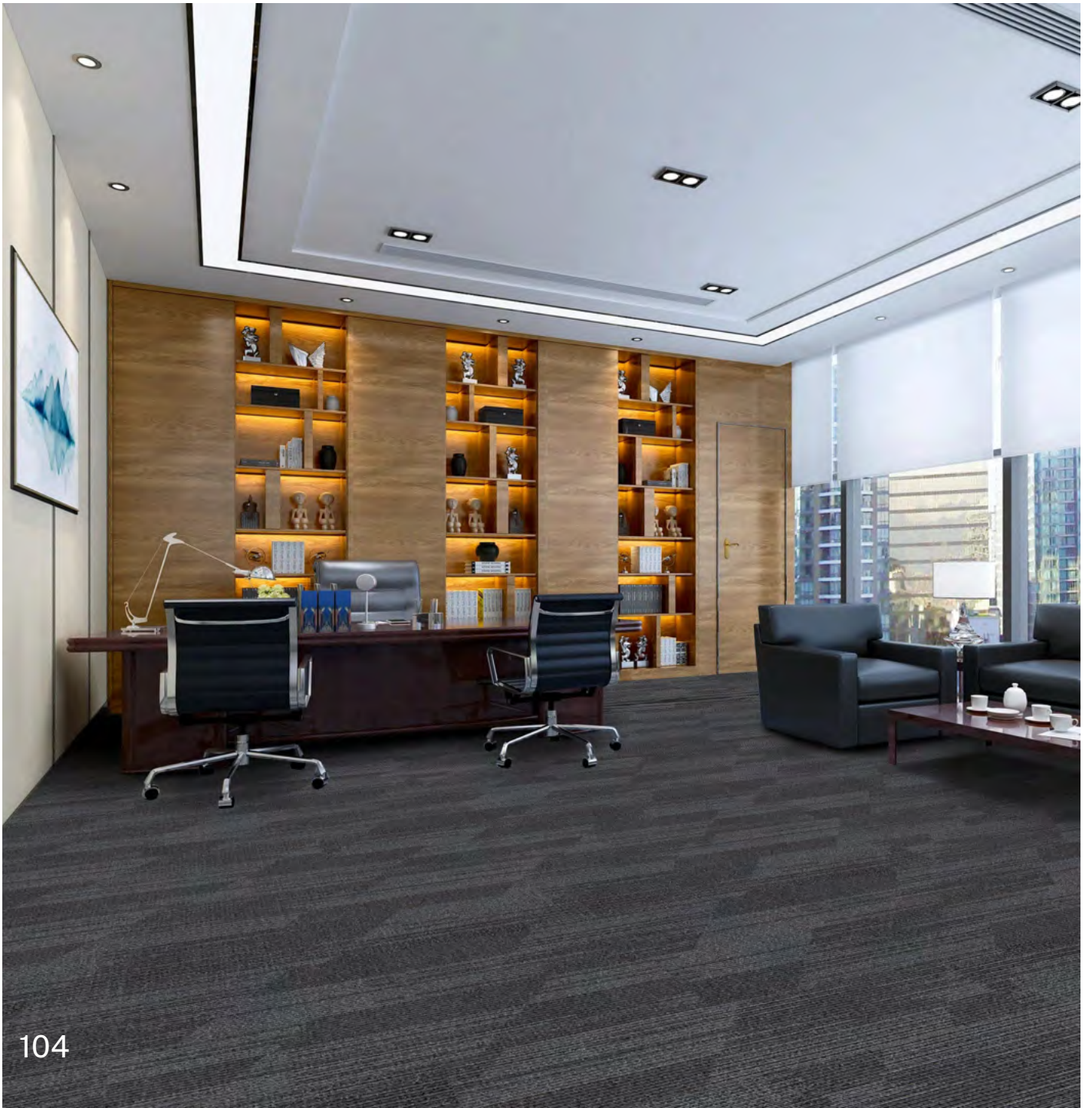
203



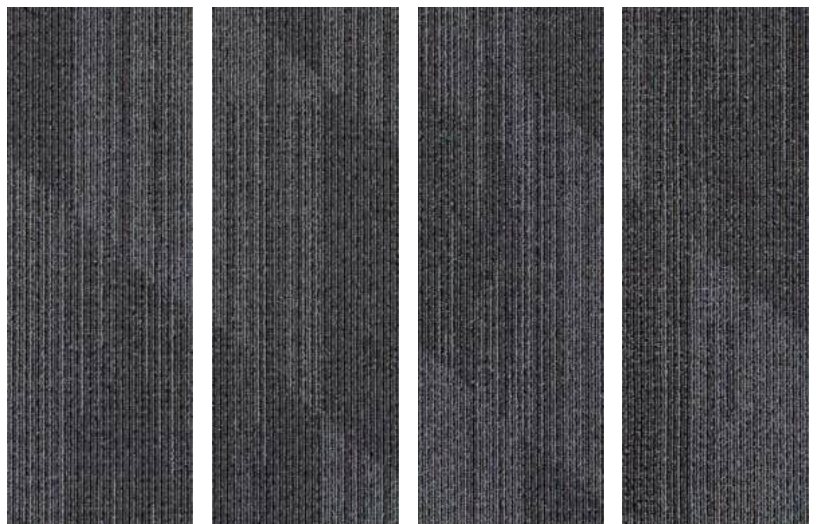
503



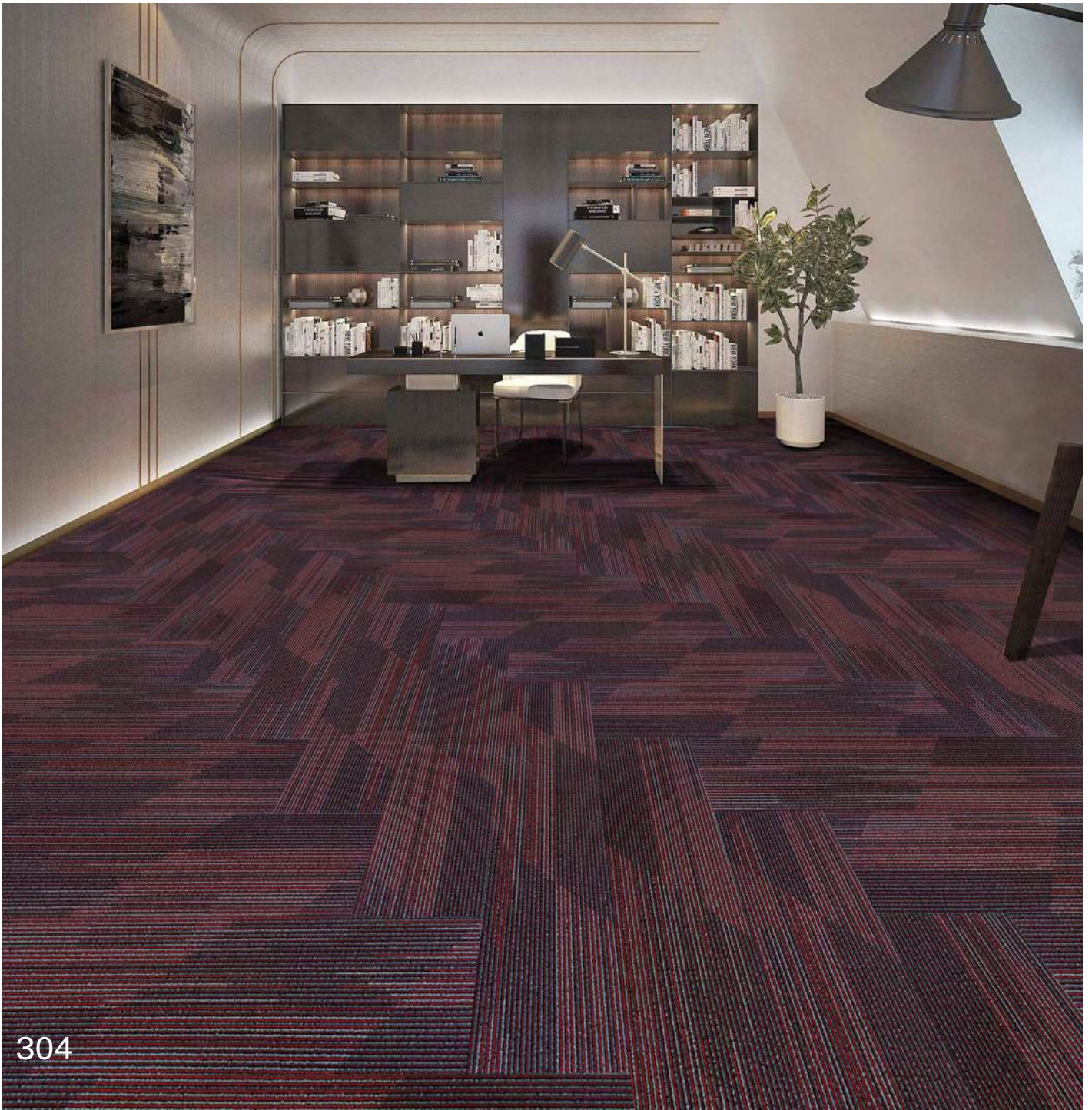
503



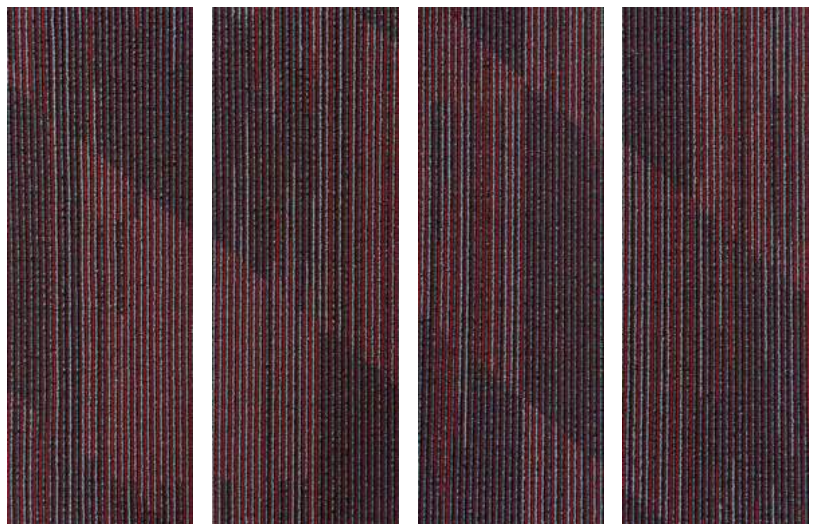
104



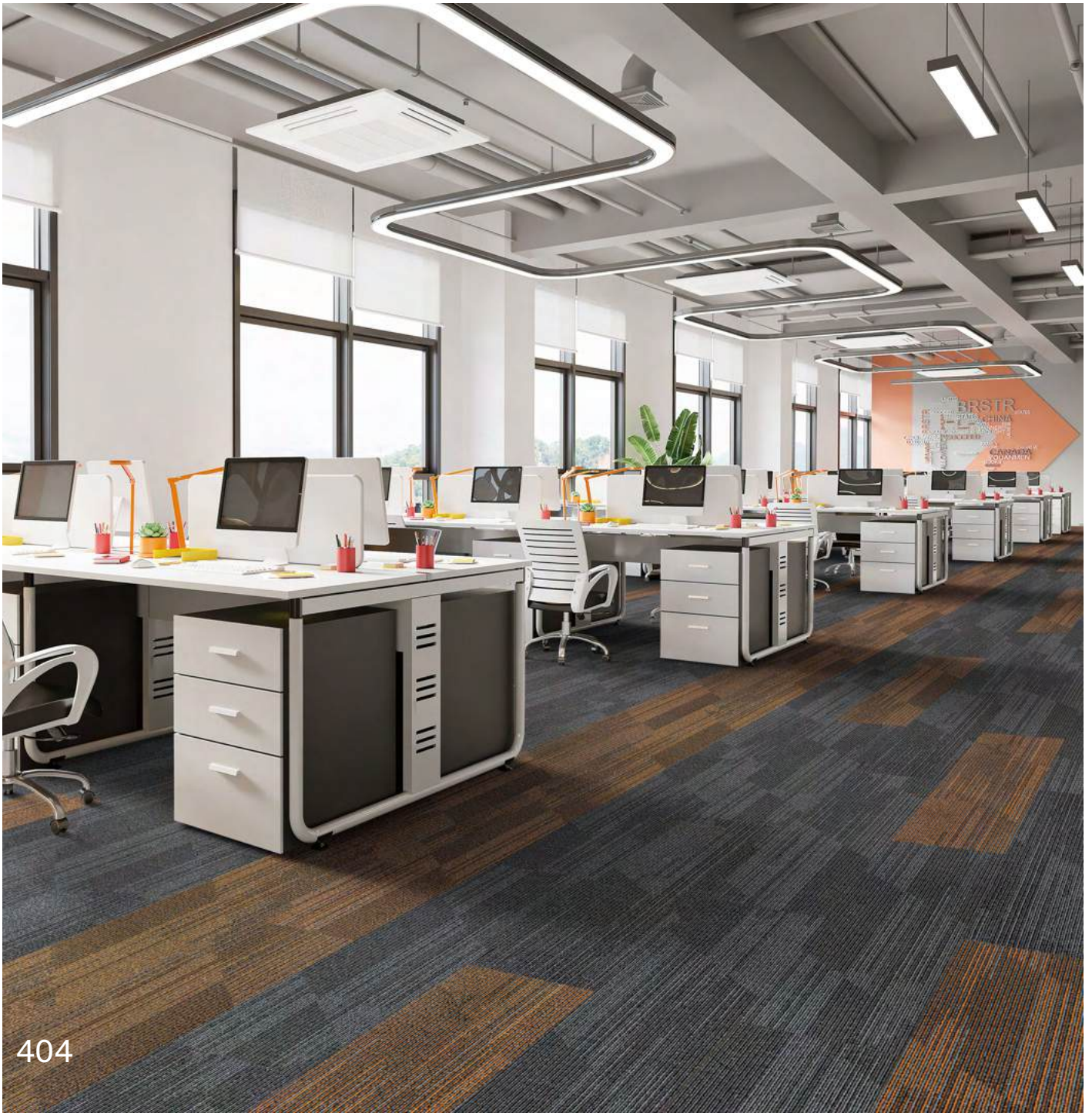
104



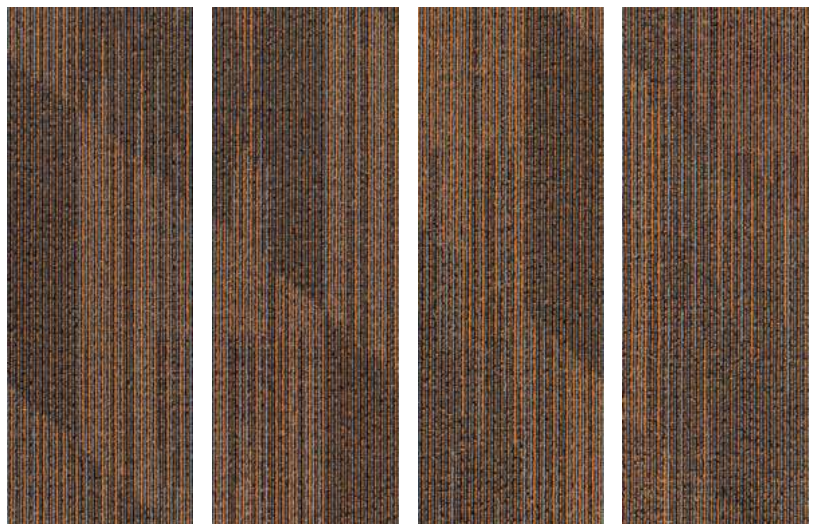
304



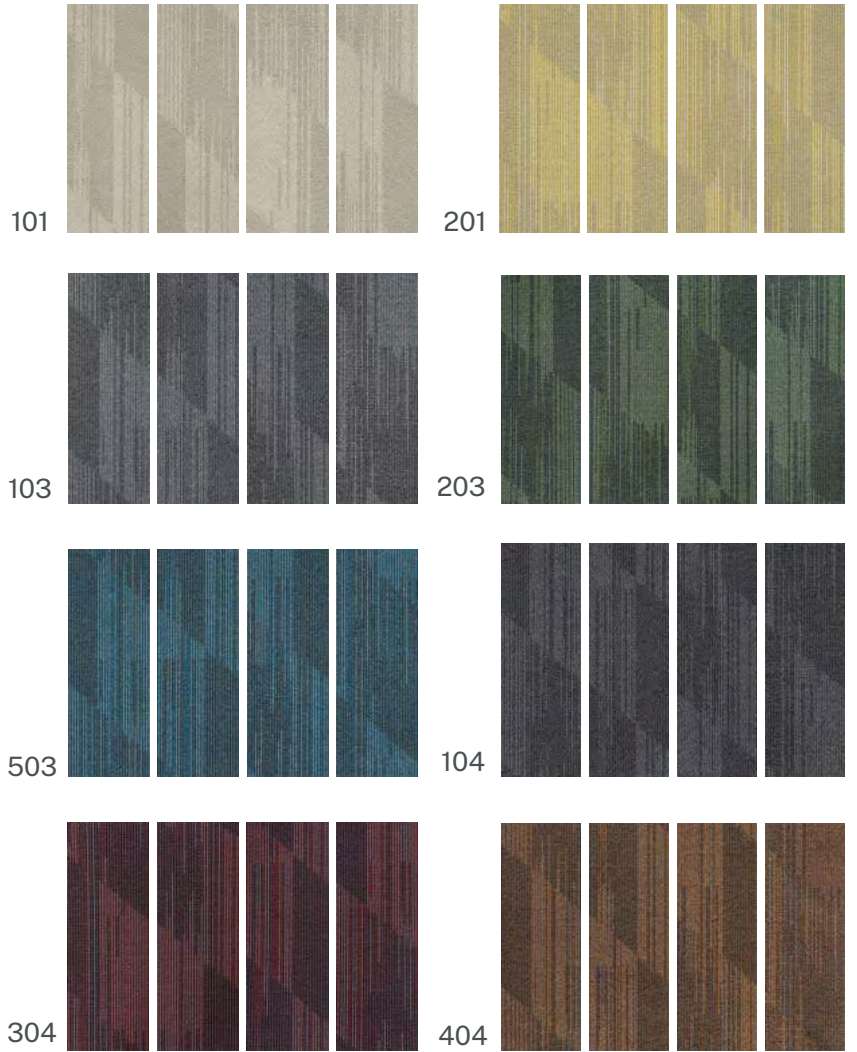
304



404



404



SPECIFICATIONS

Construction : Multi-Level Loop

Yarn: Nylon 6

Machine Gauge : 1/12

Pile Height : 3.0Mm

Pile Weight: 400G/M² (±5%)

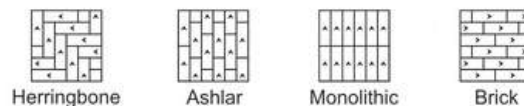
Primary Backing: Non-Woven

Secondary Backing: Pvc

Tile Size: 25*100Cm

Flame Resistance: Pass The Flammability Test(B1)

INSTALLATION METHODS



Herringbone

Ashlar

Monolithic

Brick